

Equipment

| Designation | Setup | Atomization air regulator | Air regulator fluid pressure | Suction rod | Drain rod Ø6x8 | Pump output filter | Part number |
|---------------------------------|--------------|---------------------------|------------------------------|-------------|----------------|--------------------|-------------|
| 04C240 BARE PUMP | Bare | - | - | - | - | - | 151792000 |
| 04C240 WALL-MOUNTED | Wall-Mounted | - | ♦ | - | - | - | 151792100 |
| 04C240 WALL-MOUNTED WITH FILTER | Wall-Mounted | - | ♦ | ♦ | ♦ | ♦ | 151792200 |
| 04C240 CART-MOUNTED WITH FILTER | Cart-Mounted | - | ♦ | ♦ | ♦ | ♦ | 151792400 |

Accessories

| Designation | Details | Part number |
|--|--|-------------|
| Stainless steel drain rod Ø16 elbowed F18 x 125 | SST Drain rod with Ø16 hose and fitting 18x125 | 1 049596000 |
| Stainless steel Suction rod Ø23 M26 plunging tube length elbowed 570 mm | SST Suction rod with Ø25 hose - fittings 26x125 - 600mm length | 2 149596150 |
| Stainless steel Suction rod Ø23 M26 plunging tube length 1000mm elbowed (for 200 liters drums) | SST Suction rod with Ø25 hose - fittings 26x125 - 1000mm length recommended for 200L drums | 3 149596160 |
| Pump Mounting Plate with straps | Reinforced bracket (with straps) to mount the pump on a wall | 4 056100199 |
| Two Post Cart w/o plate | Spare cart (2 handles) | 5 051221000 |

Spare Parts

| Designation | Details | Part number |
|--|---|-------------|
| Package of seals for 500-4 air motor | Seal kit for the air motor | 1 146260990 |
| SERVICING KIT FOR MOTOR 500/4 | Service kit (Seal kit + Air Motor components) for the air motor | 2 146260995 |
| PACKAGE OF SEALS FOR FLUID SECTION 120CC | Seal kit for the fluid section | 3 144970090 |
| Servicing kit for hyd. 120 | Service kit (Seal kit + Fluid Section components) for the fluid section | 4 144970095 |
| Seal kit for C240 hydraulic section (Chevron/UHMW) | | 144970090 |
| SERVICING KIT FOR HYD. C240 | | 144970095 |

04C240 Airspray Paint Pump

Airspray / Pumps



- ▶ Stainless steel construction
- ▶ Designed for medium viscosity materials
- ▶ Extended lifetime

Markets





04C240 Airspray Paint Pump

Paint circulation pump for medium or low pressure applications.

Designed for medium viscosity products with 1 or more guns. For circulating & automatic machines.



Technical data table

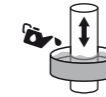
| Designation | Value | Unit: metric (US) |
|---|------------|-------------------|
| Pressure Ratio | 4 : 1 | |
| Maximum Fluid Pressure | 24 (347.8) | bar (psi) |
| Maximum Air Pressure | 6 (87) | bar (psi) |
| Maximum Temperature | 60 (140) | °C (°F) |
| Cylinder | 240 (8.1) | cc (oz) |
| Sound Level | 80 | dBa |
| Fluid Output at 30 cycles/mn | 7.2 (1.9) | l/min (gal/mn) |
| Free Flow Rate | 14.4 (3.8) | l/mn (gal/mn) |
| Air Consumption at 30 cycles/mn at 4 bar (60 psi) | 10.3 (6.1) | m³/h (cfm) |
| Air Inlet | F 3/4" BSP | |
| Fluid Outlet | M 1/2 JIC | |
| Fluid Inlet | M 26x125 | |
| Number of Cycles per liter of products | 4 | |
| Sealing Packing Lower PEHD | ♦ | |
| Sealing Packing Upper PTFE G - Polyfluid | ♦ | |
| Height | 83 (32.7) | cm (in) |
| Width | 40 (15.7) | cm (in) |
| Depth | 21 (8.3) | cm (in) |
| Wetted Shares: Stainless Steel | ♦ | |
| Weight | 27 (59.5) | kg (lbs) |



Technologies



Chevron Sealing



Cup Lub



2 Ball



Triple Chrome Layer

Performance:

- ♦ High output to feed several guns in circulation
- ♦ High suction power

Productivity:

- ♦ Ideal for most materials

Sustainability:

- ♦ Triple chrome piston & cylinder, stainless steel ball & carbide seat for long-term use
- ♦ Sleek design with few parts. The inversion system provides a fast changeover for a constant material delivery.



Description

