

## Equipment

Designation	Setup	Fluid inlet	Suction rod	Drain rod	Paint filter	Air regulator	Upper Seal	Lower seal	Part number
AIRMIX® PUMP 16C240 BARE	Bare	F 1 BSPP	-	-	-	-	Chevron	UHMW	151790000
AIRMIX® PUMP 16C240 W/M W/O FILTER W/O SUCTION	Wall mounted	M 26x125	-	-	-	2	Chevron	UHMW	151790100
AIRMIX® PUMP 16C240 W/M WITH FILTER AND SUCTION DIAM 23	Wall mounted	M 26x125	Ø23	♦	♦	2	Chevron	UHMW	151790200
AIRMIX® PUMP 16C240 TURBO W/M W/O FILTER W/O SUCTION	Wall-mounted, Turbo	M 26x125	-	-	-	2	Chevron	UHMW	151797100

## Accessories

Designation	Part number
Two Post Cart w/o plate	051221000
Pump Mounting Plate with straps	056100199
Fluid filter 3/8 Mesh 6	155580300
Stainless steel Suction rod Ø23 M26 plunging tube length elbowed 570 mm	149596150
Stainless steel Suction rod Ø23 M26 plunging tube length 1000mm elbowed (for 200 liters drums)	149596160
Stainless steel drain rod Ø16 elbowed F18 x 125	049596000

## Spare Parts

Designation	Part number
Seal kit for 2000-4 air motor including reversing-block seals	146270990
Full maintenance kit for 2000-4 air motor including reversing-block seals	146270996
GT Cartridge kit	144710100
Seal kit for C240 hydraulic section (Chevron/UHMW)	144970090
Full maintenance kit C240 hydraulic section (Chevron/UHMW)	144970095
Chevron seal, UHMW	909051102
Leather seal (pack of 10)	109050603
Adaptation assembly for Polyurethane (PU) seals	144970260
Seal kit for C240 hydraulic section (PU/PU)	144970265
Ball Ø 16, 316L stainless steel	907414142

## 16C240

Airmix® Paint Pump

Airmix® / Pumps



- Heavy duty air changeover valves.
- Used for circulation and/or multiple guns.
- Very large choice of seals and packing materials (Leather, PU, UHMW...).

## Markets





# 16C240

## Airmix® Paint Pump

The 16C240 Airmix® pump is designed to pump large quantities of fluid product. Turbo version prevents ice build-up on continuous operations.

For medium output applications and automatic machines.



### Technical data table

Designation	Value	Unit: metric (US)
Pressure Ratio	16/1	
Maximum Fluid Pressure	96 (1392)	bar (psi)
Maximum Air Pressure	6 (87)	bar (psi)
Air Consumption	41.5 (24.4)	m³/h (cfm)
Maximum Temperature	60 (140)	°C (°F)
Cylinder	240 (8.11)	cc (oz)
Sound Level	76	dBa
Recommended Air Pressure	2 - 5 (29 - 72.5)	bar (psi)
Fluid Output at 30 cycles/mn	7.20 (1.9)	l/min (gal/mn)
Fluid Output at 20 cycles/mn	4.8 (1.27)	l/mn (gal/mn)
Fluid Volume per Cycle	240 (8.12)	cc
Free Flow Rate	14.4 (3.8)	l/mn (gal/mn)
Fluid Output at 15 cycles / mn	3.6 (0.95)	l/mn (gal/mn)
Air Consumption at 30 cycles/mn at 4 bar (60 psi)	41.5	m³/h (cfm)
Displacement Per Cycle	240 (14.64)	cc (cubic inch)
Motor Type	2000-4 / 2000-4T	
Air Inlet	F3/8" NPS - M3/4" NPS / F3/4" BSP	
Fluid Outlet	M1/2" NPS / M1/2" JIC	
Fluid Inlet	F 1" BSP / M 26 x 125	
Number of Cycles per liter of products	4	
Sealing Packing Lower PEHD	♦	
Sealing Packing Upper PTFE G - Polyfluid	♦	
Wetted Parts: Hard Chrome SST, Standard SST, Carbide	♦	
Weight	27 (59.5)	kg (lbs)



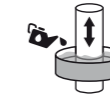
### Technologies



Turbo Motor



Chevron Sealing



Cup Lub



2 Ball



Triple Chrome Layer

### Performance:

- ♦ High output to feed several guns
- ♦ High suction power

### Productivity:

- ♦ Ideal for most materials

### Sustainability:

- ♦ Triple chrome piston & cylinder, stainless steel ball & carbide seat for long-term use
- ♦ Sleek design with minimal parts. The inversion system provides a fast changeover for constant material delivery



### Description

