

## Equipment

Designation	Part number
BSC 300	910024029

## Accessories

Designation	Part number
Network board : CC-link	110002472
Network board : EtherCAT	110002640
Network board : Ethernet/IP	110002470
Network board : Profibus	110002473
Network board : Profinet	110002391
Remote Display	910024883

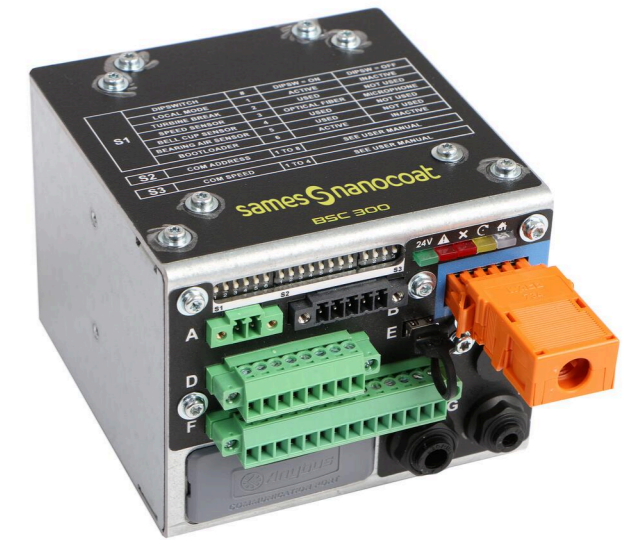
## Kits

Designation	Part number
KIT ELEC : BSC300 + MICROPHONE + GNM200 220V + ELECTRIC CABLE PPH707 WITH INTERNAL UHT	910027015
KIT ELEC : BSC300 + MICROPHONE + GNM200 220V + ELECTRIC CABLE PPH/NANO BELL CABLE UHT	910027016
KIT ELEC : BSC300 + MICROPHONE PPH AIRSPRAY	910027017
KIT ELEC : BSC300 + MICROPHONE + GNM200 110V + ELECTRIC CABLE PPH707 WITH INTERNAL UHT	910027248
KIT ELEC : BSC300 + MICROPHONE + GNM200 110V + ELECTRIC CABLE PPH/NANO BELL CABLE UHT	910027069

## BSC300

Bell Speed Controller

Electrostatic / Machines & Controllers



THE BELL SPEED CONTROLLER FOR ALL ROTARY BELL ATOMIZER.

- ▶ Bell cup speed and presence monitoring
- ▶ Network modules available for any PLC
- ▶ Remote display for visual monitoring available

## Markets

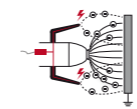




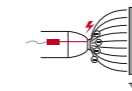
# BSC300

## Bell Speed Controller

The BSC300 module drives a Rotary bell atomizer : PPH707, PPH308, Nanobell, Accubell 709 Evo.



External Charge



Internal Charge



Rotating Bell

BSC 300 reads the frequency signal coming from **Sames** microphone speed sensor or an optical fiber converter.

Additionally, BSC 300 detects bell cup presence and air bearing issue, avoiding this kind of issue for a safe production.

Thanks to its compact design, the BSC 300 is perfectly adapted to fit on robots pressurized compartments. Of course, the BSC 300 enters easily into process cabinet.

With its enhanced connectivity, it is able to communicate to any kind of PLC with the adapted communication network board: Profinet, Ethernet/IP, CC-link or Profibus.

The advanced configuration is allowed via the USB connection and the **Sames** software.

### Performance

- 1 The compact BSC 300 makes it easy to integrate close to the rotary bell atomizer. Then Speed control is faster than ever.
- 2 BSC 300 manages bell cup detection and air supply issue, thanks to its integrated air pressure sensors.
- 3 Connectivity is a "must have" for smart process control. As **Sames** atomizers may suit to any kind of robots, anywhere in the world, BSC 300 is able to communicate to any kind of Programmable Logic Controller (PLC).

### Productivity

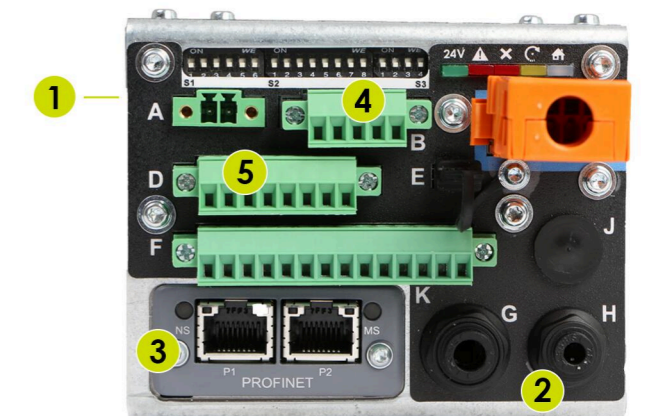
- 4 an mini-USB plug allows advanced settings for performance tuning

### Sustainability

- 5 Easy monitoring options : standard analog wired, optional visually monitoring with a remote screen, optional monitoring with a network board.



### Description



### Technical data table

Designation	Value	Unit: metric (US)
Electrical Power	+24	V
Maximum Temperature	50	°C (°F)
Robot Communication	EtherCAT, Ethernet/IP, Profinet, Profibus, CC-link	
Weight	870	g (oz)
Height	91,40 (3.6)	mm (in)
Width	100 (3.94)	mm (in)
ATEX Certification	II (2) GD [Ex ia Ga] IIC [Ex ia Da] IIC	