

Accessories

Designation	Part number
Tripod	151665705
Single post cart	151730140
Suction rod Ø6.5 M26 plunging tube length 230mm straight	151665640
Stainless Steel Suction rod Ø16 M26 plunging tube length 570 mm elbowed	149596050
Stainless Steel Suction rod Ø16 M26 plunging tube length 1000mm elbowed (for 200 liters drums)	149596060

Kits

Designation	Gun type	Tip	Hoses included	Swivel fitting	Mounting	Packing material	Output filter	Suction rod	Part number
W/M PACK AIRMIX® PUMP 10C18 W/O SUCT ROD+XCITE®+120 W/O SWIVEL	Xcite®+120	-	-	-	Wall	GT	-	-	151665700
W/M PACK AIRMIX® PUMP 10C18 & SUCT ROD+XCITE®+120 W/O SWIVEL	Xcite®+120	-	-	-	Wall	GT	-	Ø 6.35	151665720
KIT 10C18 W/M W/O SUCT WITH XCITE®+120 H7.5M AIRCAP TIPO6.094	Xcite®+120	06.094	7.5 m (24 ft)	-	Wall	GT	-	-	151665730
KIT 10C18 W/M WITH SUCT D6 XCITE®+120 H7.5M AIRCAP TIPO6.094	Xcite®+120	06.094	7.5 m (24 ft)	-	Wall	GT	-	Ø 6.35	151665740
KIT 10C18 TRIP. WITH SUCT D6 XCITE®+120 H7.5M AIRCAP TIPO6.094	Xcite®+120	06.094	7.5 m (24 ft)	-	Tripod	GT	-	Ø 6.35	151665760
KIT 10C18 W/M WITH SUCT D16 XCITE®+120 H7.5M AIRCAP TIPO6.094	Xcite®+120	06.094	7.5 m (24 ft)	-	Wall	GT	-	Ø 16	151665780
RTS TRIPOD AIRMIX® PUMP 10C18 XCITE®+120 & AIRCAP & TIP HOS7.5	Xcite®+120	06.094	7.5 m (24 ft)	-	Tripod	GT	-	Ø 16	151665770

Spare Parts

Designation	Part number
Servicing kit for air motor 340/2	144850150
Servicing kit C18 fluid section (PFA seal)	144855799
Stainless Steel Cartridge with GT seal	144030157
Valve seal, PFA (standard)	044765503
Valve seal, polyacetal	144850157
Valve seal, PU (red)	144855704
Ball Ø 16 stainless steel (standard)	907414242
Ball Ø 16 carbide	907414342
Handle	051665651

10C18 Airmix®

Paint pump

Airmix® / Pumps



COMPACT AIRMIX® PACKAGE FOR UNSURPASSED FINISHING QUALITY

- Good chemical compatibility with several choices of seals
- Fast color changes with minimum solvent consumption
- Large range of "ready to spray" kits

Markets





10C18 Airmix®

Paint pump

The 10C18 Airmix® pump is perfect for painting small quantities of fluid products, water or solvent based. The simple design reduces maintenance and cleaning time.

Recommended for small industries to benefit of both Airmix® spray technology advantages and simple and performing **Sames** pump range. Economic solution to handle low viscosity materials (up to 3000 cps) with a very low motor air consumption and a low volume fluid section for fast color changes with a minimum of product loss

The 10C18 Airmix® pump packages are available in either stand or wall-mounted versions (cart mounting as an option). Packages are available with one Xcite® + 120 bar manual Airmix® paint sprayer equipped with or without an 06.094 tip size and 7.5m (25ft) fluid and air hoses. A wide variety of accessories and tools is available for any customer needs.

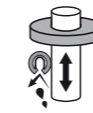


Technical data table

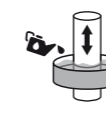
Designation	Value	Unit: metric (US)
Pressure Ratio	10/1	
Maximum Fluid Pressure	60 (870)	bar (psi)
Maximum Air Pressure	6 (87)	bar (psi)
Air Consumption	1.9 (1.12)	m³/h (cfm)
Maximum Temperature	60 (140)	°C (°F)
Sound Level	79.4	dBa
Recommended Air Pressure	2 - 5 (29 - 72.5)	bar (psi)
Fluid Output at 30 cycles/mn	0.54 (0.14)	l/min (gal/mn)
Fluid Output at 20 cycles/mn	0.36 (0.095)	l/mn (gal/mn)
Fluid Volume per Cycle	18 (0.61)	cc
Free Flow Rate	1.1 (0.29)	l/mn (gal/mn)
Fluid Output at 15 cycles / mn	0.27 (0.07)	l/mn (gal/mn)
Air Consumption at 30 cycles/mn at 4 bar (60 psi)	1.9	m³/h (cfm)
Displacement Per Cycle	18 (1.09)	cc (cubic inch)
Motor Type	340-2	
Air Inlet	F3/8" BSP	
Fluid Outlet	M 1/2" JIC	
Fluid Inlet	F 1/2" BSP / M 26x125	
Hard Chrome Stainless Steel, Wetted Parts	♦	
Number of Cycles per liter of products	55	
Sealing Packing Lower PEHD	♦	
Sealing Packing Upper GT cartridge with polyethylene packing	♦	
Height	39.2 (15.5)	cm (in)
Width	27.8 (11)	cm (in)
Depth	15 (5.9)	cm (in)
Wetted Shares: Stainless Steel	♦	
Weight	5.3 (12)	kg (lbs)



Technologies



GT Sealing



Cup Lub



2 Ball



Triple Chrome Layer

PERFORMANCE

- 1 Optimized air motor working perfectly with an air compressor of only 0,5 HP.
- 1 Quiet air motor for comfort.
- 1 Limited pulsation thanks to fast motor inversion even at very low air pressure.
- 2 Full stainless steel fluid section: perfectly adapted to a wide range of materials including waterborne paints.

PRODUCTIVITY

- 3 Large foot valve delivering enough suction power to handle a large range of material viscosity.
- 3 Suction valve fully compatible with other pump on the range (15C25 and 30C25).
- 4 Reduced fluid section volume minimizes product and solvent losses during flushing.
- 5 Closed construction decreases the risk of injuries and protect lubricant from external contamination.

Sustainability

- 3 Easy servicing with direct access to the suction valve.
- 6 Easy coupling for a quick disassembling.
- ♦ The mobile seal located on the piston ensures the mechanical cleaning of the fluid section internal wall during the paint pump run.
- ♦ No external air distributor allows 45% less part vs competitors for a better maintenance.
- ♦ Triple chrome-plated piston parts compatible with all waterborne materials.
- ♦ Single GT seal, no throat packing maintenance, low friction & large lubricant wet cup.



Description

