

Bond | Protect | Beautify

With our manual guns, automatic and robotic applicators, supplied by our wide range of pumps & machines for fluid handling, dosing, mixing & dispensing.

SAMES KREMLIN provides industrial solutions for production increase, quality improvement, material & cost savings.

We are designers and manufacturers of process equipment that is divided into 6 ranges:

Airspray: Since 1925, we have been an Airspray manufacturer bringing you the very best in finishing.

Airmix®: Creator of Airmix® Technology since 1975, we provide the perfect mix between quality and productivity.

Airless: We provide premium Airless Products for finishers with demanding applications.

REXSON Dispense: Pumping beyond possible, dispensing precisely.

Electrostatic liquid: expertise for high finishing quality & efficiency.

Powder: Powder coating solutions for the highest Productivity since 1960.

FIND YOUR
LOCAL CONTACT
BY FLASHCODE:



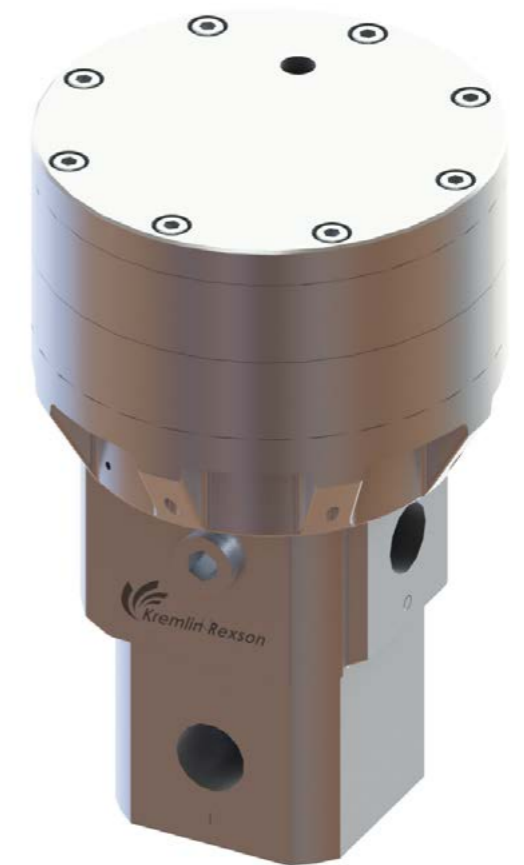
www.sames-kremlin.com



Apply your Skills



REGMASTER REGULATOR 40, 80, 120, 160 & 200 BAR



- High precision
- Low pressure loss
- Multiple plate

Related Technologies



Driven Regulator



Multi-Plate



Regulation Principle

Apply your Skills

www.sames-kremlin.com

REGMASTER 40, 80, 120 160 & 200 BAR

REGULATORS



TECHNICAL DATA

	REGMASTER 40	REGMASTER 80	REGMASTER 120	REGMASTER 160	REGMASTER 200
Number of plates	1	2	3	4	5
Inlet pressure (bar Max)	400	400	400	400	400
Outlet pressure (bar) - Regulated range	5 - 40	7 - 80	12 - 120	15 - 160	20 - 200
Air pressure (bar max)	6	6	6	6	6
Material inlet & outlet	3/4" G	3/4" G	3/4" G	3/4" G	3/4" G
Max working temperature (°C)	60	60	60	60	60
Wetted parts	Aluminum	Aluminum	Aluminum	Aluminum	Aluminum/stainless steel on request
Height (mm)	184	212	240	263	296
Diameter (mm)	150	150	150	150	150
Weight (kg)	6	6,5	7	7,5	8

REGMASTER TECHNOLOGY

A regulator is needed when you want to control fluid pressure/flow rate, change fluid pressure to different values in a short time, dampen out pulsation on pump, change over and help prevent «snake head» effect on gun opening.

The modular design enables you to control over a wide range of pressures. Our regulators are well known for their high precision and repeatability especially in automated applications.

REGMASTER 200 version is ideal for moisture-sensitive and water-based materials.



MATERIAL HANDLED

High viscosity materials: adhesives, sealant, greases...

RECOMMENDED MARKETS



AUTOMOTIVE



BUSES



LEISURE VEHICLES



CONSTRUCTION EQUIPMENT

CUSTOMER BENEFITS

- Very high precision even at low pressure
- Very good repeatability
- Easy maintenance
- 80°C heated regulators available on request
- 200 bar stainless steel version available
- Special regulators available for highly abrasive materials upon request

HIGH PERFORMANCE

- Large operating pressure range 5 - 200 bar at high flowrate
- Recommended for severe duty production

DESIGN

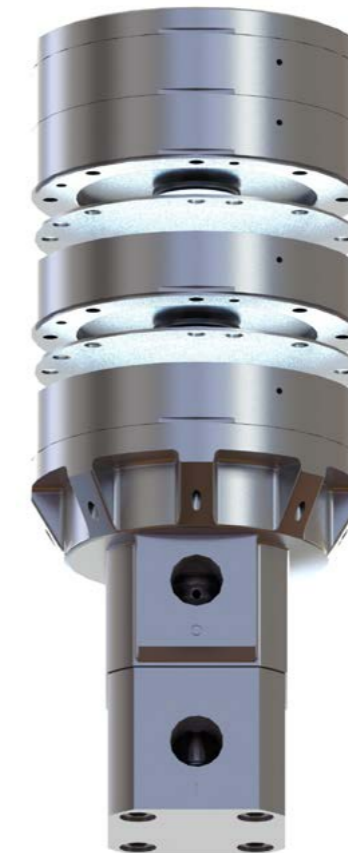
- Aluminum or stainless steel construction as an option only on the 200 bar version
- Possibility to handle two different pressures
- Compact design vs competition

HIGH PRECISION CONTROL

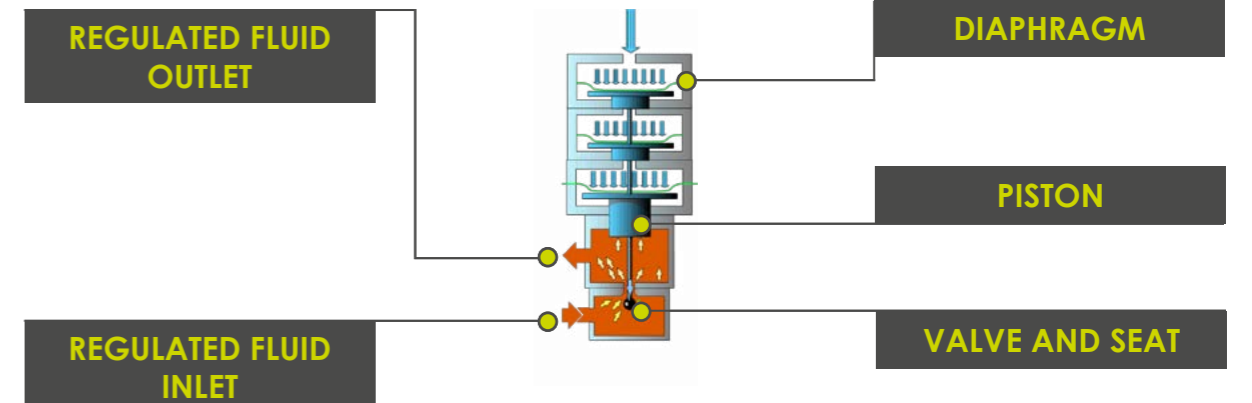
- Flow controlled by pressure air regulator
- High performance diaphragm
- Fast response time for robotic application

MODULARITY

- Simple or multiple plates to meet all customer needs: pressure range and material viscosity
- Inlet port 90° adjustable



PRINCIPLE OF OPERATION



By controlling the supply of precision air to the regulator, we are able to move the regulator piston down thus opening the material valve and allowing material to flow.