

## Equipment

REXSH0207-MO-MA-FO-SE	Motor (MO)	Material (MA)	Foot (FO)	Sealing (SE)	Model
● Motor choices (Pressure ratio)					MO=?
- Motor 1500 (9:1)	15				MO=15
- Motor 3000 (18:1)	30				MO=30
- Motor 5000 (33:1)	50				MO=50
● Lower Material selection					MA=?
- Stainless Steel		SS			MA=SS
● Foot selection					FO=?
- Follower plate (Ø=80mm)			FP		FO=FP
● Seal package selection					SE=?
- PTFE - Polytetrafluoroethylene (Teflon like properties)				01	SE=01
- PTFE + FEP (Encapsulated O-Ring: Teflon like properties over Viton or Silicone)				02	SE=02
- PE - Polyethylene (UHMWPE)				03	SE=03
- Leather				04	SE=04
- PTFEG (PTFE + Graphite impregnated)				05	SE=05
- PU (Polyurethane)				06	SE=06

## Accessory

Description	Part number
Flat Seal Follower Plate for 20-30L Drums - Ø 280-285 (pump foot Ø80)	151100100
Flat Seal Follower Plate for 30L Drums -Ø 305 (pump foot Ø80)	151100200
Flat Seal Follower Plate for 30L Drums -Ø 315 (pump foot Ø80)	151100300
Flat Seal Follower Plate for 40-60L Drums -Ø 350-360 (pump foot Ø80)	151100400
Flat Seal Follower Plate for 200L Drums -Ø 571 (pump foot Ø80)	151100500
Flat Double Seal Follower Plate for 200L Drums -Ø 571 (pump foot Ø80)	1055180301
Double O-Ring Follower Plate for 20L drum -Ø 280 (pump foot Ø80)	151101100
Double O-Ring Follower Plate for 30L drum -Ø 285 (pump foot Ø80)	151101200
Double O-Ring Follower Plate for 30L drum -Ø 305 (pump foot Ø80)	151101300
Double O-Ring Follower Plate for 30L drum -Ø 315 (pump foot Ø80)	151101400
Double O-Ring Follower Plate for 40-60L drum -Ø 360 (pump foot Ø80)	151101500
Double O-Ring Follower Plate for 200L drum -Ø 571 (pump foot Ø80)	151101600
Double O-Ring PTFE-Coated Follower Plate for 20L drum -Ø 280 (pump foot Ø80)	151102100
Double O-Ring PTFE-Coated Follower Plate for 30L drum -Ø 285 (pump foot Ø80)	151102200
Double O-Ring PTFE-Coated Follower Plate for 30L drum -Ø 305 (pump foot Ø80)	151102300
Double O-Ring PTFE-Coated Follower Plate for 30L drum -Ø 315 (pump foot Ø80)	151102400
Double O-Ring PTFE-Coated Follower Plate for 40-60L drum -Ø 360 (pump foot Ø80)	151102500
Double O-Ring PTFE-Coated Follower Plate for 200L drum -Ø 571 (pump foot Ø80)	151102600
Monocolumn elevator for 20 to 60 L. drums (not available in NA/China)	151080000
Monocolumn elevator for 200 L. drums (not available in NA/China)	151090000
Double column elevator for 20 to 60 L. drums (not available in NA/China)	151080500
Double column elevator for 200 L. drums (not available in NA/China)	151090500



# REXSON SH0207

## Shovel Pump

レクソン・ディスプレイス / ポンプ

PUMPING BEYOND POSSIBLE.

- Robust and reliable
- Simple to maintain
- Configurable and versatile

マーケット



 BOND • PROTECT • BEAUTIFY



サメス・クレムリン株式会社 〒220-0004 横浜市内西区北幸  
2-10-39日総第5ビル9階 電話：045 412 5800 ファック  
ス：045 412 5801 お問い合わせ：info@exel-  
industrial.co.jp  
www.sames.com



# REXSON SH0207

## Shovel Pump

This High Viscosity Shovel Pump is for medium pressure applications. Used with Airless® and extrusion applications requiring low to medium flow rates with a small size footprint.

The REXSON pumps of the high viscosity range have been designed with robustness in mind, and the aim of offering a high degree of modularity to follow your application. Unlike liquid fluid pumping, the high viscosity range imposes highly variable mechanical stresses from one product to another.

Double-acting shovel pumps are specifically designed to transfer fluid with a viscosity greater than 50,000 Cps and operate from 25,000 Cps for products whose particular rheology makes them difficult to pump. These pumps include a shovel that facilitates feeding the pump inlet, allowing it to move high viscosity materials.

To create your own pump that will meet your application specifications, you will have to select:

- The correct air motor according to the maximum pressure,
- The construction materials according to the nature of the product,
- The foot and mounting style according to the product packaging, and your installation
- The Seal pack (see the Documents tab to get all necessary information on our website).

Our air motors are designed for maximum airflow with a pilot distributor to allow fast inversion. They are equipped with a large silencer to avoid water freezing at the motor outlet and can be controlled (start/stop) from a remote air control.

These pumps are used as feeding equipment directly from open drums installed on a elevator using a follower plate.



## テクニカル・データベース

仕様	値	単位
最大塗料圧力	190 (2,800)	bar (psi)
最大エア圧力	6 (87)	bar (psi)
粘度	>50,000	cps
Pressure ratio (depending on air motor size)	9:1, 18:1, 33:1	
最大温度	80 (176)	°C (°F)
流体量 (1サイクルあたり)	207	cc
15サイクルでの流体出力	3,10 (0.82)	l/mn (gal/mn)
Free flowrate (@ 60 cycles/mn)	12,42 (3.28)	l/mn (gal/mn)
モーター種	1500, 3000, 5000	
エアインレット	1/2"- 3/4"BSP(F)	
流体アウトレット	3/4"BSP(F)	
Weight (fluid section only)	10.5 (32.2)	kg (lbs)
Weight range (air motor only)	5,5-21 (12.1-46.3)	kg (lbs)
Fluid inlet (Follower plate)	80mm	
Air consumption depending on motor size( see catalog)	---	
Stroke	120 (4.72)	mm (inch)



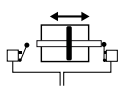
## Technologie



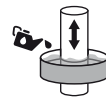
シェvronシーリング



チョップチェック



スイッチモーター



カップルプ



トリブルクロームレイヤー

## PERFORMANCE

**M1** Power distributor: Wide passageway for maximum airflow

**L1** Upper Body: The upper part of the pump is of robust construction and must be able to withstand the maximum pressures.

**L2** Upper Valve: This valve allows material to pass from the lower chamber to the upper chamber of the pump. A conical valve is used to reduce pressure loss.

**L3** Lower Valve: Uses a large conical valve to reduce the pressure loss through the pump and allow easy filling.

**L4** Shovel: Feeds the product to pump inlet. Allows the pump to dispense high viscosity material.

## PRODUCTIVITY

**M2** The Cover: Very easy to remove and to access the repair parts

**M3** The Pulse Output: The motor can be easily monitored thanks to an air pulse occurring at each reversal.

**L5** Motor adaptation flange: Unique and robust assembly of the motor shaft connection to the pump shaft. Allows quick adaptation to different air motors to vary the pressure ratio of the pump.

**L6** Guard: To guarantee the safety of the operators, this guard prevents contact with the moving shaft of the pump.

**L7** Lower Body: The pump lower is adapted as needed to be fixed on a follower plate, immersed in a bung drum, or simply threaded for connection to a manifold.

## SUSTAINABILITY

**M4** Brass guiding ring: Enduring and accurate guidance system

**M5** Camshaft inversion system: Very reliable reversal system

**L8** Upper seals packing: Our pump range has a wide range of seal materials to suit all your needs.

**L9** Rod and Cylinder: The piston shaft and the cylinder are made of triple chrome steel to ensure excellent abrasion resistance.



## 詳細

