

Equipment

Designation	Detail	Aircap	Tip	base	Part number
ATX	circulation in the base	-	-	-	129625000
ATX	circulation in the base	-	-	-	129625700

Accessories

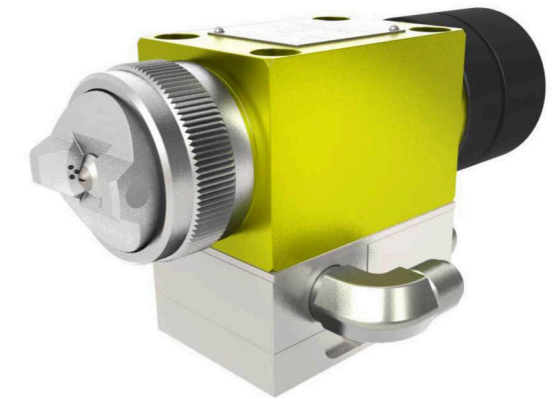
Designation	Coating	Fan adjustment	Detail	Weight	Part number
EQUIPED STAINLESS STEEL NEW BASE FOR ATX	-	-	Base side input	310	129260360
ATX BASE WITHOUT CIRCULATION	-	-	Base side input	310	129626510
BX56 NON STICK AIRCAP FOR MX ATX JX MRX	Non stick	-	-	-	132650300
BX 16 AIRCAPS WITH RING "KHVLP" MARKED	-	♦	-	-	132650450
BX 116 AIRCAPS WITH RING "KHVLP" MARKED	-	-	-	-	132650550

Spare Parts

Designation	Part number
FAN PATTERN CONTROL	029253002
REPAIR SEALS KIT FOR A25-ATX-A25 SS-ATX SS	129251995
PACK OF 2 FILTERS N° 4	129629905
PACK OF 2 FILTERS N° 2	129629906
PACK OF 2 FILTERS N° 6	129629907
PACK OF 2 FILTERS N°8	129629916

ATX

Automatic Airmix® Spray Gun

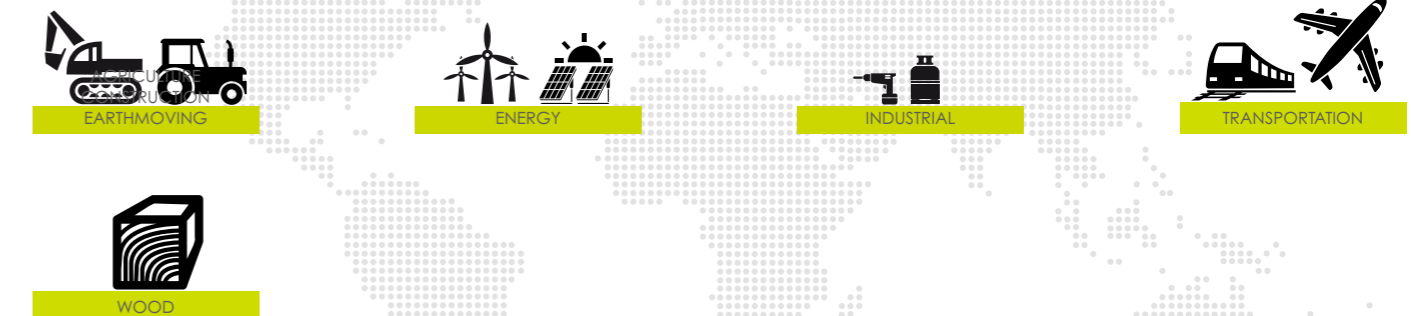


Airmix® / Automatic Guns

POLYVALENCE FOR EFFICIENT PRODUCTION

- High transfer efficiency (up to 86%*)
- Excellent atomization quality
- Modular design & extremely reliable

Markets



ATX

Automatic Airmix® Spray Gun

The automatic ATX Airmix® spraying gun ensures high level performance with unsurpassed finish spraying quality due to Airmix® technology; recommended for applying UV products.

Leading spray technology since 1975, AIRMIX® technology was invented by **Sames** to reduce paint consumption, reduce cost of ownership, increase productivity, improve working condition and preserve the environment. Continuously improved over the past 35 years, AIRMIX® is today the most efficient non electrostatic spray technology providing up to 86% transfer efficiency.

As a result, most automatic machine manufacturers using medium fluid pressure atomization have adopted **Sames** AIRMIX® automatic guns because they are reliable, deliver outstanding finish quality and their simple construction minimizes the cost of servicing and down time.

The ATX automatic spray gun, mounted on a base, has a compact design and simple construction with limited number of parts. Built with premium materials, this automatic sprayer is very reliable and brings reduced cost of ownership. The circulation can be done in the gun for quicker and better flushing with a limited volume of solvent sprayed into the machine or spray booth or in the base to reduce pressure loss in circulation systems. The ATX spray gun has stainless steel passage that is compatible with a large range of products (solvent-based & water-based).



Technical data table

Designation	Value	Unit: metric (US)
Maximum Fluid Pressure	200 (2900)	bar (psi)
Maximum Air Pressure	6 (87)	bar (psi)
Recommended Atomization Air Pressure	1 - 3 (14.5 - 43.5)	bar (psi)
Air Consumption	3 - 7.5 (2 - 4)	m3/h (cfm)
Trigger Air Pressure	3 (43)	bar (psi)
Maximum Fluid Temperature	50 (122)	°C (°F)
Carbon Steel or Stainless Steel Wetted Parts	X	
Carbide Seat	X	
Fluid Inlet	F 1/4" NPS	
Pilot Air Inlet	F 1/8" NPS	
Atomizing Air Inlet	F 1/4" NPS	



Technologies



Airmix® spray technology



HVLV



Description

Performance

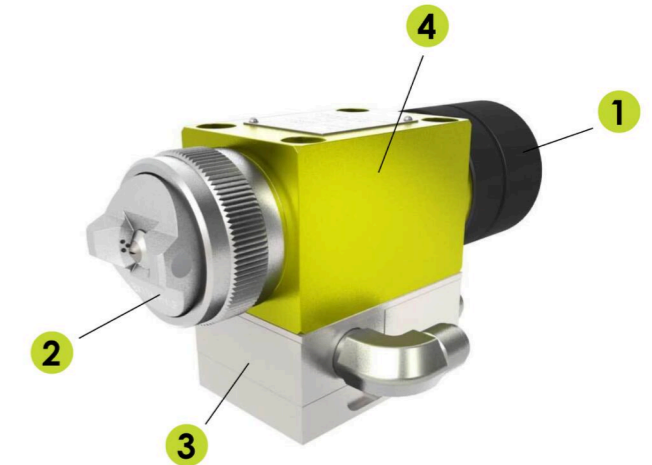
- 1 Dual spring mounted outside fluid passage allows for opening air before atomizing fluid for better spraying fan quality
 - 2 VX24 (adjustable spray) or VX124 (fix spray) & a large offering of fine finish and Xtra™ fine finish spray tips
- ◆ Extreme accuracy of film build tolerance

Productivity

- 3 Easy assembly & disassembly for easy servicing with only 4 bolts
- 3 Circulation in the base enables less pressure loss in circulation system
- 1 Circulation in the gun delivers faster, improved flushing with a limited volume of solvent sprayed into the machine or spray booth

Sustainability

- ◆ Wetted parts in stainless steel, treated stainless steel & rulon for better durability
- ◆ Extended lifetime with most coatings



* ± 2% according to EN 13966-1 norm