

??

Designation	Part number
Pump EasyPump 1.2CC (Equipped with bypass bloc)	270000156
Pump EasyPump 2.4CC (Equipped with bypass bloc)	270000157
Pump EasyPump 3CC (Equipped with bypass bloc)	270000158
Pump EasyPump 4.5CC (Equipped with bypass bloc)	270000159
Pump EasyPump 6CC (Equipped with bypass bloc)	270000160
Pump EasyPump 10CC (Equipped with bypass bloc)	270000161

??

Designation	Part number
Retrofit kit to install "EasyPump" instead of "Compact" Pump	910032527
Retrofit kit to install "EasyPump" instead of "Easyrincing" Pump	910032528
Retrofit kit to install "EasyPump" instead of "FCG" Pump	910032530
Retrofit kit to install "EasyPump" instead of "H" Pump	910032532

??

Designation	Part number
Bypass block equipped	270000162
UPvalve, pilot valve	910012239S
Seal PTFE	160000283
A	160000277
A	160000278
A	160000279
A	160000280
A	160000281
A	160000282
Seals Kit	160000288
Lip seal, viton	270000032

EasyPump

Gear Pump for Flow management

?? / ??



ACCURATE FLOW FOR HIGH FINISHING RESULTS!

- Accurate Dosing
- Improved Cleaning
- Easy Maintenance

Markets





EasyPump

Gear Pump for Flow management

Made of stainless steel, the EasyPump is dedicated to manage the flow of most standard water-borne and solvent-borne paints. The wide range of outputs (from 1,2 to 10cc per revolution) will cover a full range of applications.

The **EasyPump range** enables solvent-borne and water-borne liquid paints for general industrial applications to be sprayed using all the **Sames** automatic and robotic sprayers from our electrostatic range. This pump comes in 6 capacities defined by the number of cubic centimeters of paint delivered per revolution:

- 1.2 cm3 /Rev
- 2.4 cm3 /Rev
- 3 cm3 /Rev
- 4.5 cm3 /Rev
- 6 cm3 /Rev
- 10 cm3 /Rev

These different models cover a flow rate range from 2 to 50 l/hour. The gear pump ensures a paint flow that is proportional to its rotation speed. The choice is made with respect to the target flow and the rotation speed range. It is recommended to operate the pump at a speed lower than 80 rpm.

All the EasyPump range is fully compatible with the UPside CCV color change block as well as the innovative PaintSave push-out technology from **Sames**. To allow high flexibility, these pumps can also fit perfectly the robot motor coupling.

- **Accurate Dosing:** The design helps reducing the gap in gear assembly, which gives accurate flow for high finishing results.
- **Improved Cleaning:** Revolutionary design reducing drastically the dead zones to allow a faster and easier flushing.
- **Easy Maintenance:** High quality raw materials (Stainless Steel) for an improved lifetime combined with dedicated maintenance kits with seals to reduce downtimes.



??	??	??
?? ?? ??	15 (220)	bar (psi)
?? ?? ??	3 - 7 (45 - 100)	bar (psi)
?? ?? ??	800 (0,03)	cc/mn (cfm)
?? ??	30 (1)	cc/min (cc/oz)
?? ?? ??	6 (90)	bar (psi)
?? ?? ?? ??	± 2	%
?? ??	2.7x4	
ATEX	II 2 G Ex h IIA T4 Gb	



Performance



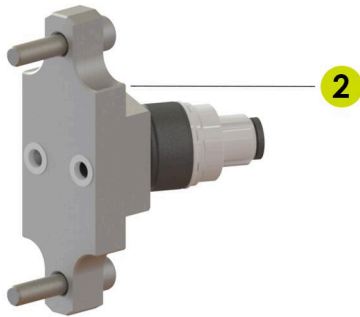
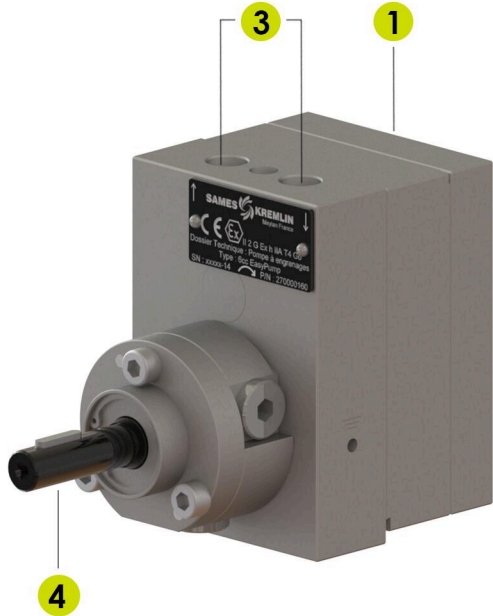
- 1 Specifically designed to reduce the gap in gear assembly and give accurate flow for high finishing results
- 2 Efficient flushing thanks to the bypass block at the rear of the pump
- ♦ Limited amount of dead zones to allow a faster and easier

Productivity

- 2 During flushing and loading there is a bypass function around the gearwheels, in parallel to an internal flushing of gearwheels and shafts
- 3 Same interface between all the pumps for unlimited compatibility
- ♦ Wide range of outputs from 1,2 to 10cc per revolution

Sustainability

- 4 Robust transmission shaft, treated and maintained by several bearings and an axial stop
- ♦ All parts in contact with product are in Stainless Steel
- ♦ The cleaning process helps to lubricate rotating parts
- ♦ Maintenance kits (including seals) are dedicated for each type of gearpump



??	??	??
Nominal maximum speed (rpm)	80	rpm