

## Equipment

Designation	Part number
1K Control 14 heat circuits	IC214A1PC1E
2K Control 8 heat circuits	IC408G1PC1A
Double 1K Control 18 heat circuits	IC218A2PC1E

## Accessories

Designation	Part number
Sames Intec system control cabinet	♦♦♦♦




## IS5000

System control cabinet

High Viscosity / Machines & Controllers



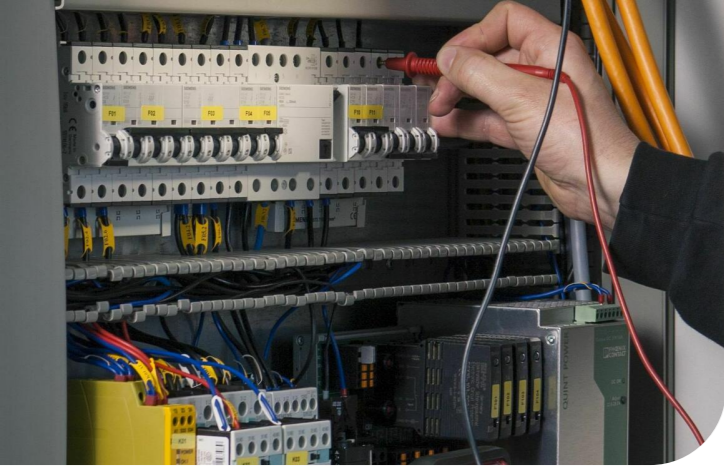
### COMPACT AND EASY CONTROL

-  High performance real time automation technology
-  Compatible with industry 4.0
-  Fully integrated vision system

### Markets



BOND • PROTECT • BEAUTIFY



# IS5000

## System control cabinet

The compact IS5000 universal cabinet is for gluing, heating systems, and ram stations. It is designed for single, double, twin and 2K adhesive systems.



Swirl

The IS5000 controller solution covers all kinds of body in white, final assembly and battery application gluing systems for **Sames**. It is able to handle 1K and 2K material, and also twin and double systems while feeding dosing units in different sizes. The design is modular. The customer can choose between a compact or a stand cabinet depending on their specificities, e.g. required heating zones. IS5000 is equipped with a high performance industrial PC, which meets all current industry 4.0 standards and integrates a state of the art network infrastructure. As an additional feature, the industrial PC is able to control a double dosing system with two cameras which are completely independent from each other.

A clear and easy operation was key in the development of the control panel. Therefore, multiple languages are available (European languages, Chinese, Russian and Vietnamese). In addition, the customer has the possibility to switch the visualization from the gluing to the optional vision system.

Our in-house engineering and software programming is at your disposal for every individual adaptation of the system.



## Technical data table

Designation	Value	Unit: metric (US)
Heating zones (up to)	14 (32)	
Number of pumps to be controlled	2 (4)	
Cabinet cooling (optional)	♦	
Microsoft Windows OS (MUI)	X64	
Display touch screen	♦	
Standard Configuration	3 x 400V/N/PE, 50 Hz, 25 (32) A	
Number of dosing units to be controlled standard (max.)	1 (3)	
All possible interfaces available	♦	
Real time soft PLC with own visualization	♦	

## Performance

- ♦ Software: ultra fast communication with real time technology allows almost no delay in signal exchange
- ♦ Hardware: several performances available (low, mid and high)
- ♦ Visualization: the integration of a vision system allows to switch between gluing and vision software

## Productivity

- ♦ All in one use: versatile system for controlling heating zones, ram stations and dosing units
- ♦ Saves energy: less power consumption thanks to energy saving mode
- ♦ Modularity: standard components available in general industry

## Sustainability

- ♦ High durability: electronic components can be reused for next production life cycle
- ♦ Compact design: cost and space saving with double system or stand cabinet
- ♦ Exhaustive software support & individual solutions
- ♦ External communication: all fieldbus networks are supported



## Description

