

Equipment

Designation	Mixing ratio	Pressure ratio	Max flowrate	Number of base	Number of catalyst	number of solvent	Part number
PU 3000	50:1-1:1	53:1	2000cc (0.4 gal)	1	1	1	155680102
PU 3000	50:1-1:1	53:1	4000cc (0.8 gal)	1	1	1	155680150
PU3000 (Flowmax®)	50:1-1:1	40:1	4000cc (0.8 gal)	1	1	1	155680175



PU3000 Airless

Plural Component Mixing and Dosing Paint Pump

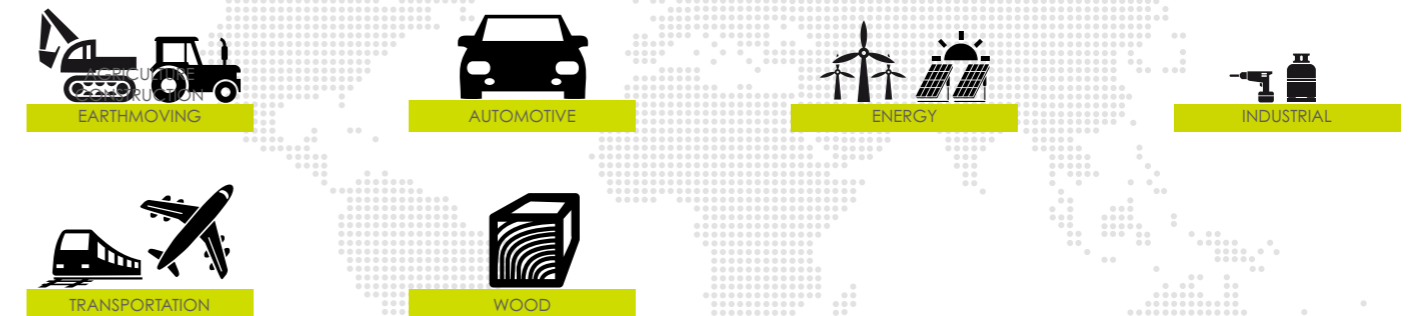


Airless / Machines & Controllers

READY TO USE INNOVATIVE AND SIMPLE MIXING AND DOSING SOLUTION

-  **User friendly**
-  **Material mixing quality**
-  **Security of application**

Markets



BOND • PROTECT • BEAUTIFY

Sames reserves the right to modify its equipment or specifications without further notice. Document, products and pictures shown are not contractual. Adress is a registered trademark. FR n° 1 222 301 - 2023/0



PU3000 Airless

Plural Component Mixing and Dosing Paint Pump

The PU3000 Airless combines electronic control and mechanical dosing & mixing and includes pumping, metering & electronic functions. The user-friendly control box allows the operator to intuitively learn how to operate the machine. It is available in 2 versions : 2 liters and 4 liters

Mechatronic dosing equipment, innovative and patented solution, PU 3000 AIRLESS includes pumping, metering and electronic (Plug & Spray);

Its intuitive use requires few learning. The PULSE FREE ELECTRONIC CONTROL (PFE) **Sames** patent, an innovation in the control of pump change over is the only one in the world that prevents any lack of product during injection - base or catalyst - which could alter the quality of dosing. It also allows to follow in real time the ratio - WYSIWYG - the displayed ratio is the real ratio.

The injectmix system allows to inject a customizable catalyst volume in a continuous flow of base - directly in a very high performance mixern which guarantees the mixing quality.

The FLOWMAX® technology - fluid section with sealing made with a bellow - used on the catalyst side prevents its crystallization. The electronic technology alerts if needed and constantly monitors the actual material consumption of products years calculates the VOC's.

WYSIWYG: What You See Is What You Get



Technical data table

Designation	Value	Unit: metric (US)
Mixing ratio	1/1 - 20/1	
Electrical Power	115/230	V
Mixing Accuracy	+/- 1	%
Maximum Fluid Pressure	350 (5100)	bar (psi)
Maximum Fluid Output	4000	cc/min (oz/min)
Maximum Air Pressure	6 (87)	bar (psi)
Maximum Temperature	50/122	°C (°F)
Air Inlet	F 3/4 BSP	
Fluid Outlet	F 3/4 JIC	
Fluid Viscosity (min-max)	< 20.000	in CA4 seconds (or centipoise cps)
Stainless Steel, PEHD Wetted Parts	♦	
Weight	170/217	kg (lbs)



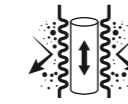
Technologies



PFE



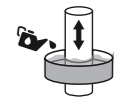
Injectmix



Flowmax® Feeding



GT Sealing



Cup Lub



2 Ball



Triple Chrome Layer

Performance

- 1 Easy to work plug and spray concept including pumping metering and electronic
 - 2 Quality of mixed materials thanks to the direct injection in the high performance unique design static mixer (INJECTMIX technology)
 - 3 Unsurpassed - 1% mixing accuracy due to the innovative pump change over technology
- ♦ The electronic alerts if needed and constantly monitors the material consumption and calculates the VOC

Productivity

- 4 Easy and quick learning thanks to the intuitive use
- ♦ Production stop prevented thanks to the design without flowmeter
 - ♦ Constant fluid flow rate thanks to the **Sames** Pulse Free Electronic Control (PFE)
 - ♦ Low cost of ownership for fast Return On Investment (ROI)

Sustainability

- 5 Stainless steel fluid passages for water-based materials.
 - 6 Durability due to the FLOWMAX® bellow technology on the catalyst side preventing any leaks for moisture sensitive materials
- ♦ Rugged design for industrial use



Description

