

??

Designation	Part number
PPH 707 EXTi Atomizer (Large Pins Version)	910033322

??

Designation	Part number
EC43 Titanium bell cup	910028230
Air shroud Kit 43 NW	910028336
EC50 Aluminum bell cup	910003159
EC50 Titanium bell cup	910008756
Air shroud Kit 50 NW	910033775
EX65 Aluminum bell cup	910004615
EX65 Titanium bell cup	910009383
Air shroud Kit 65 NW	910030826
Equipped Electrode (Large Pin)	910031931
High voltage contact needle (Large Pin)	910031932
O-ring set (Turbine Side)	910003415
O-ring set (Body Side)	910003416
Nanovalve	1510004
Microvalve	1507375
Injector D.: 1.8 (Standard)	90000158




PPH 707 EXTi

Fingerless External Charge Electrostatic Rotary Bell Atomizer

?? / ??? ?



FINGERLESS EXTERNAL CHARGE FOR AUTOMOTIVE INTERIORS AND PLASTIC PARTS

-  Outstanding productivity
-  Highly performing by nature
-  Eco-friendly solution at low investment cost even more with PaintSave

Markets



BOND • PROTECT • BEAUTIFY



PPH 707 EXTi

Fingerless External Charge Electrostatic Rotary Bell Atomizer

The PPH 707 EXTi is designed to access complex shape parts, as interior cut-ins of vehicles or plastic bumpers, and to paint waterborne material continuously.

Outstanding productivity:

The PPH 707 EXTi improves productivity in allowing continuous waterborne application without refill time between jobs as for canister system and without paint volume limitation as for insulated paint system. On the other hand, it offers an extended production time up to 8 hours without manual cleaning thanks to its innovative patented air blow ring system, which protects the charge ring in non-conductive PTFE material from contamination, combined with a bell atomizer cleaner device for automatic cleaning.

Highly performing by nature:

The fingerless conception of the PPH 707 EXTi combined with a compact design make it able to spray on any complex shapes, as interior cut-ins of vehicles or plastic bumpers, and improve the robot trajectories for better performances.

The 16 electrodes arranged around the charge ring, for improved high voltage performances, charge properly the droplets to generate a unique wrap-around effect reducing overspray. Offered with the renowned range of high-speed magnetic bell cups (EC43, EC50 & EX65) in addition to the proven High Velocity Turbine, the PPH 707 EXTi is reaching the finest atomization.

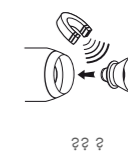
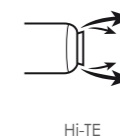
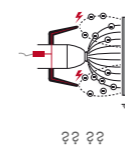
Eco-friendly solution at low investment cost even more with PaintSave:

The PPH 707 EXTi brings a solution environmentally friendly by the use of water-borne materials which are better for the environment than solvent-borne. In addition, the investment cost is drastically reduced because the system is less expensive than any other internal charge waterborne solutions such as canister or insulated paint system.

Moreover, the combination of electrostatic effect with PaintSave system allows huge paint savings.



??	??	??
??	7.5 (16.5)	kg (lbs)
?? (?? ??)	20 - 40	seconds FORD Cup#4
?? ?? ?? ??	6 - 8 (87 - 116)	bar (psi)
?? ?? ??	10 (145)	bar (psi)
?? ?? ??	100 (0.0265)	cc/min (gal/min)
?? ?? ??	300 (0.0800)	cc/min (gal/min)
?? ?? ??	600 (0.1600)	cc/min (gal/min)
?? ??	20 - 70 000	rpm
?? ??	70	kV
?? ??	500	µA
ATEX	II 3 G X T6 0.24 mJ < E < 350 mJ Type B-L EN 50176	
High voltage Unit	UHT330i	
High voltage control module	GNM300: II (2) G [350 mJ < Ex < 2J]	



Performance:

- 1 Fingerless conception combined with compact design to access complex shape parts, as interior cut-ins of vehicles or plastic bumpers
- 2 Renowned range of high-speed magnetic bell cups (EC43, EC50 & EX65) for uniform atomization
- 3 High Velocity Turbine for high rotation speed allowing fine atomization
- 4 16 electrodes arranged around the charge ring to charge properly the droplets

Productivity:

- 4 Charge ring in non-conductive PTFE material for 8 hours without manual cleaning
 - 5 Patented air blow ring to protect the charge ring from contamination
- ◆ No more paint volume limitation for waterborne application in comparison to insulated systems
 - ◆ Continuous waterborne application for outstanding productivity

Sustainability:

- 6 Electrodes edges are equipped with large pins to make the cleaning easier and safer for operators
 - 7 Easy operation and maintenance thanks to many common parts between EXT and EXTi
 - 8 Most robust turbine on the market providing the longest warranty: 7 years/30 000 hours
- ◆ Eco-friendly solution by the use of water-borne materials which are better for the environment than solvent-borne

