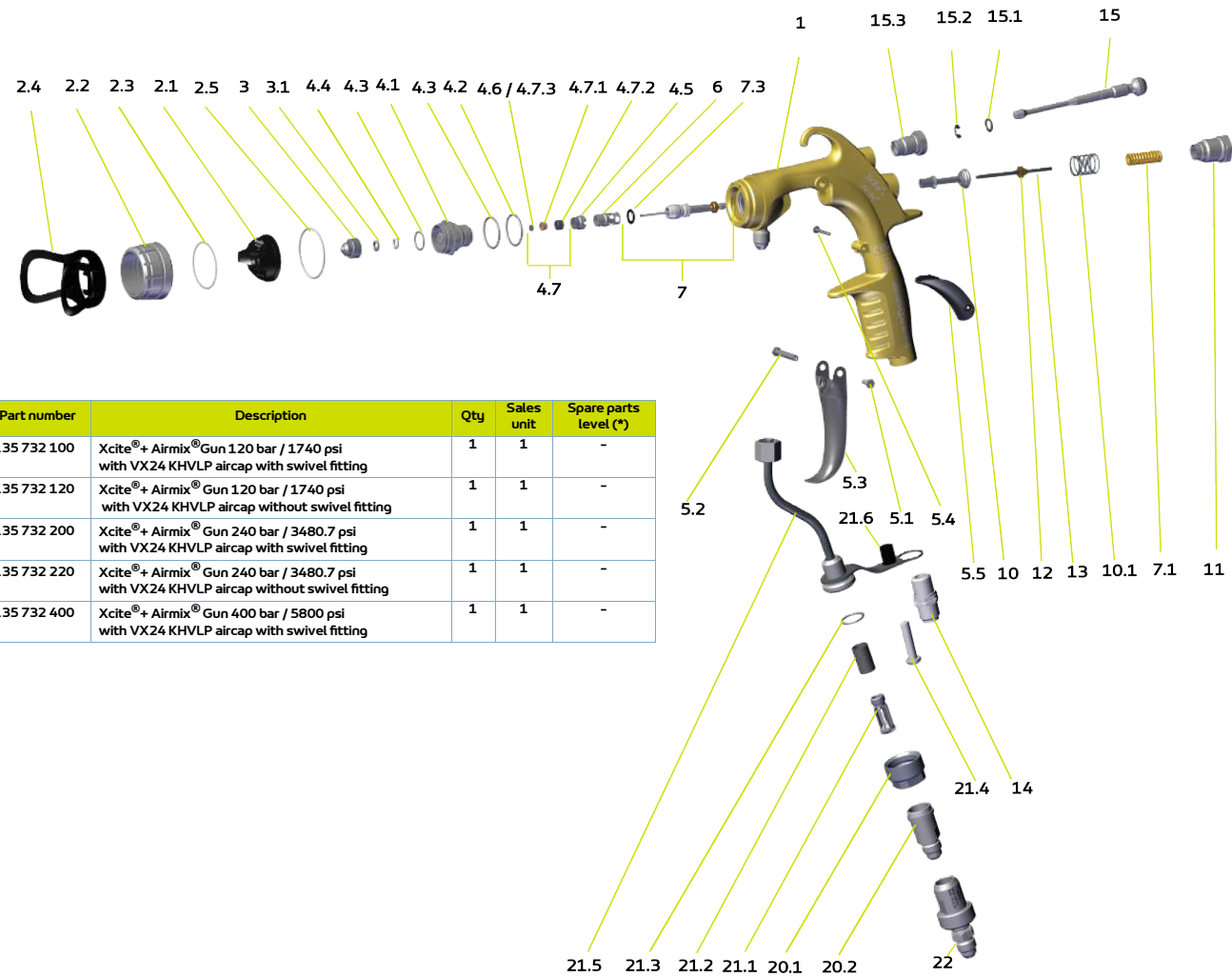


# XCITE®+ & XCITE®+ LIGHT AIRMIX® SPARE PARTS BREAKDOWN



Item	Part number	Description	Qty	Sales unit	Spare parts level (*)
-	135 732 100	Xcite®+ Airmix® Gun 120 bar / 1740 psi with VX24 KHVLP aircap with swivel fitting	1	1	-
-	135 732 120	Xcite®+ Airmix® Gun 120 bar / 1740 psi with VX24 KHVLP aircap without swivel fitting	1	1	-
-	135 732 200	Xcite®+ Airmix® Gun 240 bar / 3480.7 psi with VX24 KHVLP aircap with swivel fitting	1	1	-
-	135 732 220	Xcite®+ Airmix® Gun 240 bar / 3480.7 psi with VX24 KHVLP aircap without swivel fitting	1	1	-
-	135 732 400	Xcite®+ Airmix® Gun 400 bar / 5800 psi with VX24 KHVLP aircap with swivel fitting	1	1	-

## GUNS COMMON PARTS

Item	Part number	Description	Qty	Sales unit	Spare parts level (*)
1	-	Gun body assembly	1	0	-
2	132 720 020	Airmix® aircap VX24 KHVLP equipped	1	1	1
2.1	-	• Aircap	1	0	-
2.2	-	• Ring	1	0	-
2.3	129 720 075	• Seal, aircap (package of 2)	1	1	1
2.4	132 720 003	• Tip protection for Airmix® Xcite® aircap (package of 3)	1	1	1
2.5	150 040 330	• Seal, ring (package of 10)	1	1	1
4	129 732 907	Seat-holder assembly Xcite®+ (without seat)	1	1	-
4.1	-	• Seat-holder	1	0	-
4.2	129 729 913	• Xcite® seat holder thread protection O-Ring (package of 10)	1	1	1
4.3	150 040 329	• O-Ring (package of 10)	1	1	1
4.4	129 729 912	• Aircap seal on Xcite® seat holder (package of 5)	1	1	1
4.5	029 600 106	• Screw for seat	1	1	-
4.6	129 740 910	• Diffusor (package of 10)	1	1	1
5	129 725 909	Trigger + safety lever Xcite® Light	1	1	1
5.1	-	• Screw, HM 3x8, stainless steel	1	0	-
5.2	-	• Spindle, trigger	1	0	-
5.3	-	• Trigger	1	0	-
5.4	-	• Pin	1	0	-
5.5	-	• Safety lever	1	0	-
6	129 733 211	Xcite® cartridge stop (package of 5)	1	1	1
10	129 720 030	Air valve assembly	1	1	1
10.1	050 311 321	• Valve spring	1	1	-
12	-	Needle carrier	1	0	-
13	-	Needle rod	1	0	-
14	050 102 624	Air fitting, M 1/4 NPS stainless steel	1	1	-
15	129 720 020	Xcite® assembled air needle	1	1	1
15.1	150 040 328	• O-Ring (package of 10)	1	1	1
15.2	102 202 101	• Ring Ø 5 (package of 10)	1	1	1
15.3	-	• Air needle sleeve	1	0	-

(\*)  
Level 1: 1st emergency parts  
Level 2: Wear parts

## SPECIFIC PARTS FOR XCITE®+ GUN

Item	Part number	Description	Qty	Sales unit	Spare parts level (*)
20	129 520 370	Cup and nut assembly	1	1	-
20.1	029 520 306	• Nut	1	1	-
20.2	029 520 372	• Filter body	1	1	-
21	129 720 085	Assembled product tube without tank Xcite®	1	1	-
21.1	029 720 083	• Screen support	1	1	-
21.2	129 609 908	• Screen n°6 (package of 5)	1	1	1
21.3	129 529 918	• Seal PTFE (package of 10)	1	1	1
21.4	934 081 332	• Screw stainless steel	1	1	-
21.5	-	• Protective tube	1	0	-
21.6	029 670 072	• Spacer	1	1	-

(\*)  
Level 1: 1st emergency parts  
Level 2: Wear parts

## SPECIFIC PARTS FOR XCITE®+ LIGHT GUN

Item	Part number	Description	Qty	Sales unit	Spare parts level (*)
16	905 210 709	Stainless steel fitting, double male 1/2 JIC 500 bar / 7252 psi	1	1	-
17	129 209 902	Seal, tip (package of 5)	1	1	1

(\*)  
Level 1: 1st emergency parts  
Level 2: Wear parts

## SPECIFIC PARTS FOR XCITE®+ & XCITE®+ LIGHT GUN 120 BAR/1740 PSI

Item	Part number	Description	Qty	Sales unit	Spare parts level (*)
11	-	Sleeve, needle stop (120 bar / 1740 psi)	1	0	-
4.7	129 740 909	Seat with seal, stainless steel (package of 2)	1	1	1
4.7.1	129 740 911	• Seal, seat (package of 10)	1	1	1
4.7.2	-	• Stainless steel seat	1	0	1
4.7.3	129 740 910	• Diffusor (package of 10)	1	1	1
7	129 720 150	Needle assembly Xcite® 120 bar / 1740 psi with spring	1	1	1
7.1	129 729 914	• Xcite® fluid needle spring (120 bar / 1740 psi) (package of 5)	1	1	1
7.2	102 202 113	• Ring Ø 8 (package of 10)	1	1	1
7.3	109 420 298	• Cartridge seal FKM (package of 10)	1	1	1
7.4	-	• Needle	1	0	-

(\*)  
Level 1: 1st emergency parts  
Level 2: Wear parts

## SPECIFIC PARTS FOR XCITE®+ & XCITE®+ LIGHT GUN 240 BAR/3480 PSI

Item	Part number	Description	Qty	Sales unit	Spare parts level (*)
11	-	Sleeve, needle stop (240 bar / 3480 psi)	1	0	-
4.7	129 740 908	Seat with seal, carbide (package of 2)	1	1	1
4.7.1	129 740 911	• Seat seal (package of 10)	1	1	1
4.7.2	-	• Carbide seat	1	0	1
4.7.3	129 740 910	• Diffusor (package of 10)	1	1	1
7	129 732 250	Needle assembly Xcite®+ 240 bar / 3480 psi	1	1	1
7.1	129 732 915	• Fluid spring for Xcite®+ 240 bar / 3480 psi (package of 5)	1	1	1
7.2	102 202 113	• Ring Ø 8 (package of 10)	1	1	1
7.3	109 420 298	• Cartridge seal, FKM (package of 10)	1	1	1
7.4	-	• Needle	1	0	-

(\*)  
Level 1: 1st emergency parts  
Level 2: Wear parts

## SPECIFIC PARTS FOR XCITE®+ GUN 400 BAR/5800 PSI

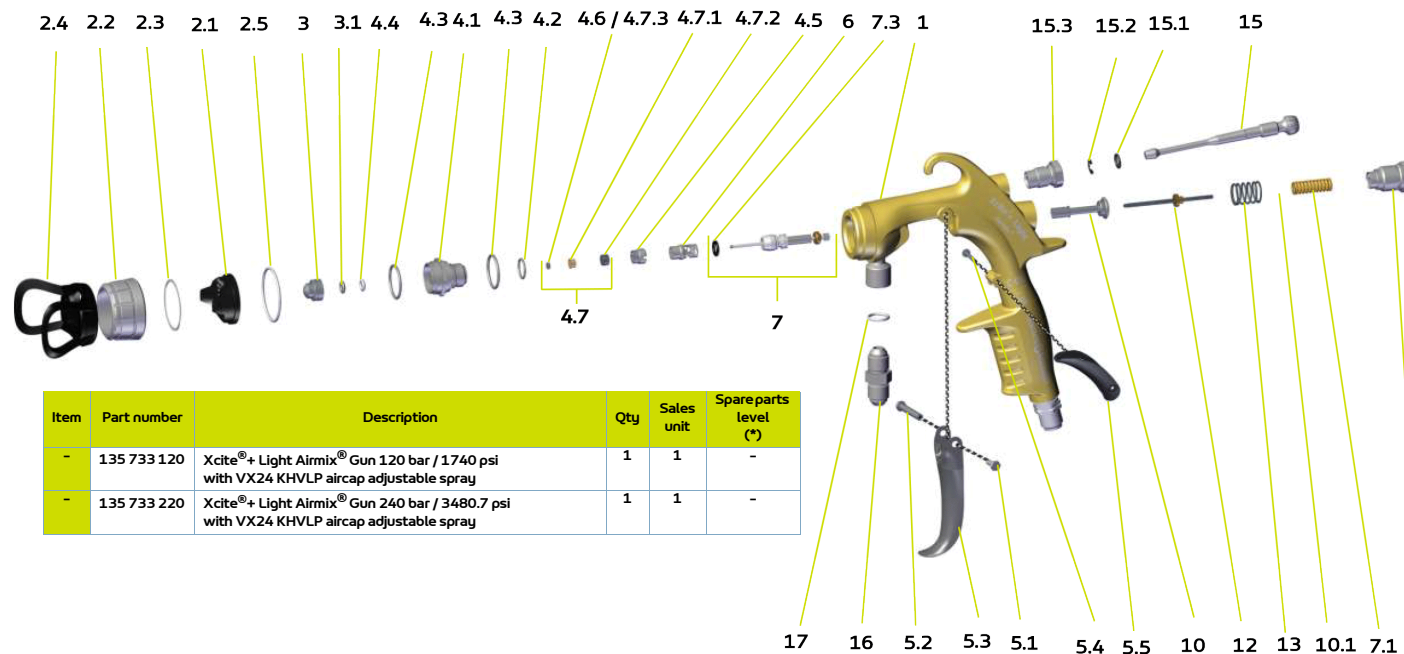
Item	Part number	Description	Qty	Sales unit	Spare parts level (*)
11	-	Sleeve, needle stop (400 bar / 5800 psi)	1	0	-
4.7	129 740 908	Seat with seal, carbide (package of 2)	1	1	1
4.7.1	129 740 911	• Seat seal (package of 10)	1	1	1
4.7.2	-	• Seat, Carbide	1	0	1
4.7.3	129 740 910	• Diffusor (package of 10)	1	1	1
7	129 720 450	Needle assembly 400 bar / 5800 psi	1	1	1
7.1	129 729 916	• Needle spring (400 bar / 5800 psi) (package of 5)	1	1	1
7.2	102 202 113	• Ring Ø 8 (package of 10)	1	1	1
7.3	109 420 298	• Cartridge seal, FKM (package of 10)	1	1	1
7.4	-	• Needle	1	0	-

(\*)  
Level 1: 1st emergency parts  
Level 2: Wear parts

## SPECIFIC PARTS FOR XCITE®+ GUN SWIVEL FITTING

Item	Part number	Description	Qty	Sales unit	Spare parts level (*)
22	129 732 425	Swivel fitting MF 1/2 JIC (500 bar / 7252 psi)	1	1	1

(\*)  
Level 1: 1st emergency parts  
Level 2: Wear parts



Item	Part number	Description	Qty	Sales unit	Spare parts level (*)
-	135 733 120	Xcite®+ Light Airmix® Gun 120 bar / 1740 psi with VX24 KHVLP aircap adjustable spray	1	1	-
-	135 733 220	Xcite®+ Light Airmix® Gun 240 bar / 3480.7 psi with VX24 KHVLP aircap adjustable spray	1	1	-

