



02C85 AIRSPRAY

Equipment

Designation	Setup	Atomization air regulator	Air regulator fluid pressure	Additional regulator	Suction rod	Part number
02C85 BARE PUMP	Standard, Bare	-	-	-	-	144941000
02C85 WALL-MOUNTED	Standard, Wall-Mounted	•	•	-	•	151760200
02C85 SST BARE PUMP	Stainless Steel, Bare	-	-	-	-	144940000
02C85 SST WALL-MOUNTED	Stainless Steel, Wall-Mounted	•	•	-	•	151761200
02C85 SST WALL-MOUNTED + REGULATORS	Stainless Steel, Wall-Mounted	•	•	•	•	151761400

Accessories

Designation	Details	Part number
Stainless fitting m 1/2 JIC f 3/8 nps	SST Fitting F 3/8	144850150
Kit sst suction rod d.16 w/connector 18x125 + strainer	SST Suction rod with Ø16 hose, strainer and fitting 18x125	144941490
Trolley 1 arm	Spare cart (one handle)	144941495

Spare parts




Designation	Details	Part number
MAINTENANCE PACKAGE FOR 350 MOTOR	Seal kit for the air motor	144850150
SEALS TO KIT FOR HYD 75	Seal kit for the fluid section	144941490
SERVICING KIT FOR HYD. 75	Service kit (Seal kit + Fluid Section components) for the fluid section	144941495

02C85 AIRSPRAY

IDEAL SOLUTION TO INTEGRATE AND CAN FEED ONE OR SEVERAL GUNS TO SPRAY MEDIUM VISCOSITY COATINGS

Range/Airspray/pumps



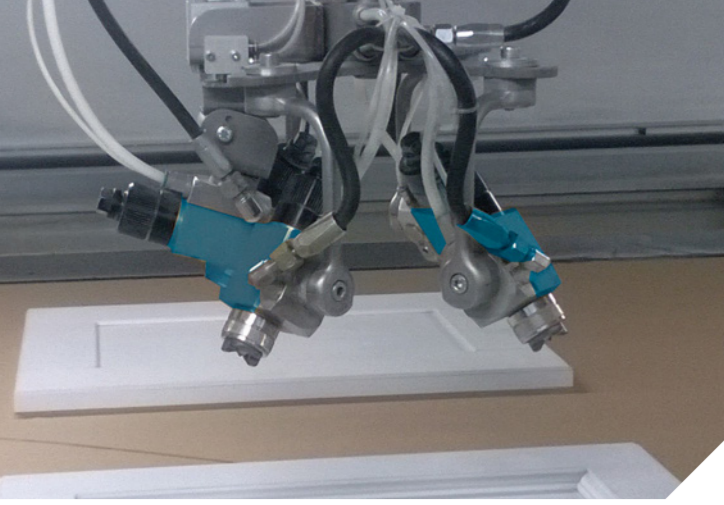
-  **Simplified maintenance and servicing**
-  **Reinforced reliability: GT seal**
-  **Compact Design: easy to integrate**



Apply your Skills

www.sames-kremlin.com

02C85 AIRSPRAY



- Economical solution: less wastage during flushing & quick color changes
- Ultimate pump control: priming at very low pressure
- For a large range of viscosities: fluid section special design

AIRSPRAY 02C85 is based on 80 years of SAMES KREMLIN technical expertise, innovation and dedication to our customers. This pump range is designed to apply a large range of materials while reducing labor and maintenance costs and articulates around 3 strong themes: Efficiency, Optimization and Simplicity.

Together with **SAMES KREMLIN** airspray guns, the AIRSPRAY 02C85 pump provides exceptional performances (quality of finish, high transfer efficiency). To meet all customer requirements, a large choice of accessories allows to create various airspray or electrostatic airspray configurations.



Material handled

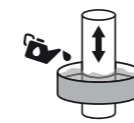
One component or two component solvent or water-based materials, high solids, varnishes, lacquers, polyurethanes, stains, epoxy, adhesives.



Technical data table

Designation	Value	Unit : metric (US)
Pressure Ratio	2 : 1	
Maximum Fluid Pressure	10 (144.9)	bar (psi)
Maximum Air Pressure	6 (87)	bar (psi)
Weight	5 (11)	kg (lbs)
Maximum Temperature	60 (140)	°C (°F)
Cylinder	85 (2.9)	cc (oz)
Sound Level	81	dBa
Fluid Output at 30 cycles/mn	2.6 (0.7)	l/min (gal/mn)
Free Flow Rate	5.1 (1.3)	l/min (gal/mn)
Air Consumption at 30 Cycles/mn at 4 Bar (60 psi)	2.1 (1.2)	
Air Inlet	F 3/8" BSP	
Fluid Outlet	M 3/8" NPS	
Fluid Inlet	M 18x125	
Number of cycles per liter of products	12	
Sealing packing lower acetal resin seal	♦	
Sealing packing upper GT cartridge with polyethylene packing	♦	
Height	41 (16.1)	cm (in)
Wetted parts aluminum, stainless steel	♦	
Width	28 (11)	cm (in)
Depth	17 (6.7)	cm (in)

Technology



Cuplub



GT Sealing



Triple chrome layer



2 Ball



Description

