

Equipment

Designation	Fluid inlet fitting	Cartridge	Suction rod	Drain rod	Atomizing air regulator	Air regulator fluid pressure	Pump outlet filter	Part number
Wall mounted 15C50 F 1/2 BSP with Air plate	F 1/2"	GT	-	-	♦	♦	-	151143000
Wall mounted 15C50 M26x125 with Air plate	M 26x125	GT	-	-	♦	♦	-	151143050
Wall-mounted 15C50 with filter and rods	M 26x125	GT	Ø23	♦	♦	♦	♦	151143250
Wall-mounted 15C50 with filter	M 26x125	GT	-	♦	♦	♦	♦	151143450

Accessories

Designation	Part number
Wall-mounted totem	151140240
Dismountable trolley	151241000
Dismountable trolley with drum table	151242000
Gravity hopper 6 liters	151140230
Stainless steel Suction rod Ø23 M26 plunging tube length elbowed 570 mm	149596150
Stainless steel Suction rod Ø23 M26 plunging tube length 1000mm elbowed (for 200 liters drums)	149596160
Stainless steel drain rod Ø16 elbowed F18 x 125	049596000
Fluid filter Mesh 6 3/8 (Inlet F1/2"JIC - Outlet M1/2"JIC)	155580600
Air plate with 2 air regulators	151140070

Kits

Designation	Gun type	Two gun manifold	Tip	Hoses included	Swivel fitting	Mounting	Packing material	Output filter	Suction rod	Part number
KIT 15C50 WALL/M WO ROD & FILTER & XCITE®+120 & TWIST SWIVEL	Xcite®+ 120	-	-	7.5 m (24 ft)	•	Wall	GT	•	-	151265052
KIT 15C50 WALL/M +ROD & FILTER & XCITE®+120 & TWIST SWIVEL	Xcite®+ 120	-	-	7.5 m (24 ft)	•	Wall	GT	•	Ø 23	151265053
Airmix® PACK 15C50 W/M FILTER SUC Xcite®+Light120 12.114 H7.5M	Xcite®+ 120 Light	-	12-114	7.5 m (24 ft)	•	Wall	GT	•	Ø 23	151143600
KIT 15C50 WALL/M PMP & ROD & XCITE®+120 & TWIST SWIVEL	Xcite®+ 120	-	-	7.5 m (24 ft)	•	Wall	GT	-	Ø 23	151265050
PACK 15C50 2G W/M MBA SUC D25+FIL 2/ XCITE®+120+2/09114+2/H7.5	2 x Xcite®+ 120	•	2 x 09-114	2 x 7.5 m (24 ft)	2	Wall	MB-A	•	Ø 23	151143650

Spare Parts

Designation	Part number
Servicing kit for 245-4 air motor	144140190
Reversing kit	144130191
GT Cartridge kit	144130205
GT cartridge and piston kit	144135291
MB-A Cartridge kit	144135365
MB-A cartridge and piston kit	144135389
Servicing kit C50 fluid section	144135237

15C50

Airmix® Paint Pump

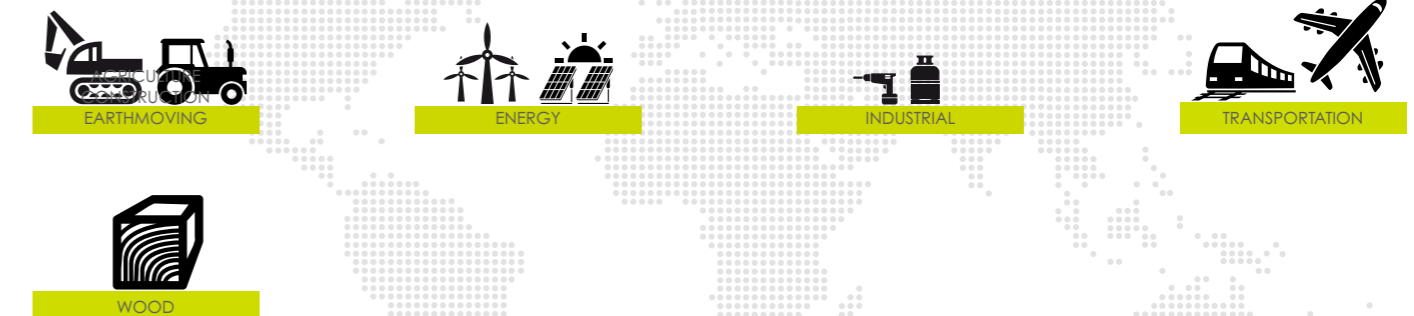
Airmix® / Pumps



PRODUCTIVITY FOR ALL

- Good chemical compatibility with GT or MB-A cartridges.
- Two gun management available.
- Suction rod or gravity hopper.

Markets





15C50

Airmix® Paint Pump

The 15C50 Airmix® pump is perfect for painting medium quantities of fluid products, water or solvent based. Up to 90 bar of fluid pressure to compensate pressure drops.

The 15C50 compact AIRMIX® paint pump is recommended to handle all types of materials ranging from medium to low viscosity. The 15C50 AIRMIX is particularly suited for 1 or 2 AIRMIX® gun applications and heated spray systems. Create various AIRMIX & AIRMIX® electrostatic configurations with our large choice of accessories to meet all customer requirements.



Technical data table

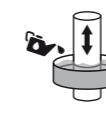
Designation	Value	Unit: metric (US)
Pressure Ratio	15/1	
Maximum Fluid Pressure	90 (1305)	bar (psi)
Maximum Air Pressure	6 (87)	bar (psi)
Air Consumption	3.55 (2.09)	m³/h (cfm)
Maximum Temperature	60 (140)	°C (°F)
Cylinder	50 (1.68)	cc (oz)
Weighted Sound Level	74.9	dBA
Recommended Air Pressure	2 - 5 (29 - 72.5)	bar (psi)
Fluid Output at 30 cycles/mn	1.5 (0.4)	l/min (gal/mn)
Fluid Output at 20 cycles/mn	1.0 (0.26)	l/mn (gal/mn)
Fluid Volume per Cycle	50	cc
Free Flow Rate	3.0 (0.78)	l/mn (gal/mn)
Fluid Output at 15 cycles / mn	0.75 (0.2)	l/mn (gal/mn)
Air Consumption at 30 cycles/mn at 4 bar (60 psi)	3.55	m³/h (cfm)
Displacement Per Cycle	50 (3.05)	cc (cubic inch)
Motor Type	420-4	
Air Inlet	F3/8" BSP / F3/8" BSP	
Fluid Outlet	F 3/8 " NPS / M1/2 JIC	
Fluid Inlet	F 1/2 " BSP / M26x125	
Number of Cycles per liter of products	20	
Sealing Packing Upper and Lower GT polyethylene	♦	
Height	58.5 (23)	cm (in)
Width	32 (12.6)	cm (in)
Depth	17 (6.69)	cm (in)
Wetted Parts: Hard Chrome SST, Standard SST, Carbide	♦	
Weight	8 (17.6)	kg (lbs)



Technologies



GT Sealing



Cup Lub



2 Ball



MBA cartridge



Triple Chrome Layer



Description

Performance

- ◆ Quiet and balanced air motor for constant delivery
- ◆ Ergonomic design
- ◆ Pulse-free for a superior finish
- ◆ Able to prime at very low air pressure (0.6 bar / 8.7 psi) for easy paint loading
- ◆ Designed to eliminate dead zones for quick color changes

Productivity

- ◆ Closed construction - zero injury risk
- ◆ Lubricant protected from external contamination
- ◆ Easy rotatable outlet fitting to fit every configuration
- ◆ No tie rods - intermediate hosing for easy assembly
- ◆ Leak indicator weep hole for fast visual inspection
- ◆ Simple coupling & quick disassembly
- ◆ Large foot valve (Ø20, Ø14) to handle high viscosity materials up to 5,000 cPs - carbide seat

Sustainability

- ◆ Differential air motor for a stall-free system
- ◆ Quick reversing valve to eliminate pump surge
- ◆ Ice-free air motor
- ◆ 50% fewer parts vs competition, less spare parts required
- ◆ GT cartridge:
 - no throat packing maintenance
 - low friction
 - flat cartridge body design to eliminate dead zones for easy flushing
- ◆ Ultra chrome-plated piston rodless friction & abrasion resistance for increased pump life
- ◆ Exhaust valve (upper) has large passages and carbide seat

