

Equipment

| Designation | Setup | Fluid inlet | Suction Rod | Drain Rod | Paint filter | Air Regulator | Upper seal | Lower seal | Part number |
|---|--------------|-------------|-------------|-----------|--------------|---------------|------------|------------|-------------|
| 20C50 PUMP GT SEAL W/M WITH FILTER AND RODS | Wall mounted | M 26x125 | Ø 23 | + | + | 2 | GT | GT | 151773100 |

Accessories

| Designation | Part number |
|--|-------------|
| Wall mounted support for bare pump | 044910121 |
| Two Post Cart w/o plate | 051221000 |
| Pump Mounting Plate with straps | 056100199 |
| Gravity hopper 6 liters | 151140230 |
| Stainless steel Suction rod Ø23 M26 plunging tube length elbowed 570 mm | 149596150 |
| Stainless steel Suction rod Ø23 M26 plunging tube length 1000mm elbowed (for 200 liters drums) | 149596160 |
| Stainless steel drain rod Ø16 elbowed F18 x 125 | 049596000 |
| Fluid filter 3/8 Mesh 6 | 155580300 |

Kits

| Designation | Maximum output pressure(bar (psi)) | Gun type | Tip | Hoses included | Swivel fitting | Mounting | Packing material | Output filter | Suction rod | Part number |
|---|------------------------------------|-------------|-----|----------------|----------------|----------|------------------|---------------|-------------|-------------|
| PACK 20C50 GT W/M & Xcite®+120B & ROD & HOSE 7.5M | 120 (1740) | Xcite®+ 120 | - | 7.5 m (24 ft) | • | Wall | GT | • | Ø 23 | 151260973 |

Spare Parts

| Designation | Part number |
|--|-------------|
| Seal kit for 500-4 air motor | 146260990 |
| Maintenance kit for 500-4 air motor | 146260995 |
| Seal kit for C50 hydraulic section (GT/GT) | 144950097 |
| Full maintenance kit C50 hydraulic section (GT/GT) | 144950098 |
| Ball Ø 16, 316L stainless steel | 907414142 |
| Ball Ø 9.52, 316L stainless steel | 907414623 |

20C50 GT

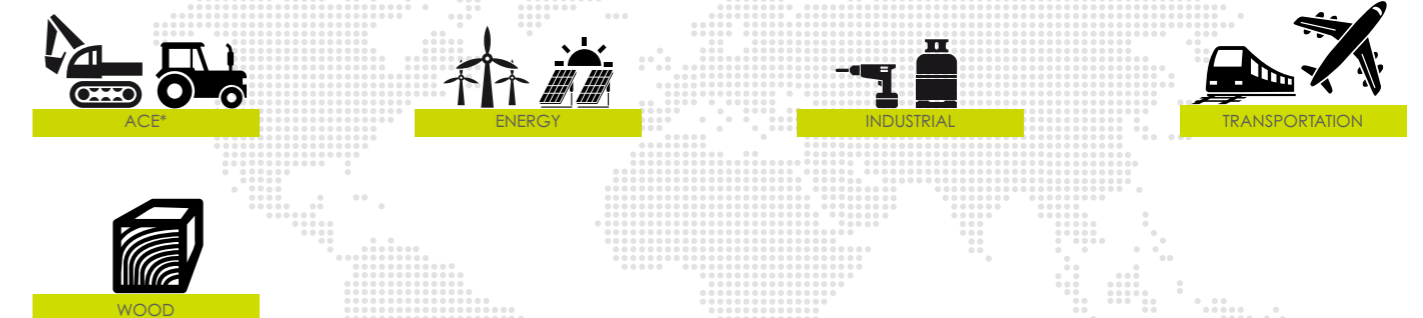
Airmix® Paint Pump

Airmix® / Pumps



- ▶ Suction rod or gravity hopper
- ▶ Heavy duty air changeover valves
- ▶ GT seal for water based and high solid content.

Markets



20C50 GT

Airmix® Paint Pump

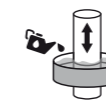
The 20C50 GT Airmix® pump is a medium-range, all purpose pump for medium viscosity products. Special model with GT seal for water based and high solid content.



Technologies



GT Sealing



Cup Lub



2 Ball



Triple Chrome Layer



Description

Performance:

- ◆ Economical with low air consumption
- ◆ Quiet air motor to preserve work environment

Productivity:

- ◆ Construction without dead zones for quick flushing & product changes
- ◆ The mobile seal located on the piston ensures the mechanical cleaning of the fluid section internal wall during pump runs
- ◆ Lower mobile single lip packing (GT) reducing friction for improved efficiency

Sustainability:

- ◆ Fewer parts & simple design for extended lifetime
- ◆ Upper single lip packing (GT) reducing friction for improved efficiency
- ◆ Triple chrome layer piston for exceptional durability

A large choice of accessories allows you to create various configurations to meet all customer requirements.



Technical data table

| Designation | Value | Unit: metric (US) |
|--|------------------------|-------------------|
| Pressure Ratio | 20/1 | |
| Maximum Fluid Pressure | 120 (1740) | bar (psi) |
| Maximum Air Pressure | 6 (87) | bar (psi) |
| Air Consumption | 10.8 (6.4) | m³/h (cfm) |
| Maximum Temperature | 60 (140) | °C (°F) |
| Cylinder | 50 (1.69) | cc (oz) |
| Sound Level | 78 | dBa |
| Recommended Air Pressure | 2 - 5 (29 - 72.5) | bar (psi) |
| Fluid Output at 30 cycles/mn | 1.5 (0.4) | l/min (gal/mn) |
| Fluid Output at 20 cycles/mn | 1.0 (0.26) | l/mn (gal/mn) |
| Fluid Volume per Cycle | 50 | cc |
| Free Flow Rate | 3.0 (0.78) | l/mn (gal/mn) |
| Fluid Output at 15 cycles / mn | 0.75 (0.2) | l/mn (gal/mn) |
| Air Consumption at 30 cycles/mn at 4 bar (60 psi) | 10.8 | m³/h (cfm) |
| Displacement Per Cycle | 50 (3.05) | cc (cubic inch) |
| Motor Type | 500-4 | |
| Air Inlet | F3/8" BSP / F3/8" BSP | |
| Fluid Outlet | F 1/2" NPS / M1/2" JIC | |
| Fluid Inlet | F 1/2" BSP / M26x125 | |
| Number of Cycles per liter of products | 20 | |
| Sealing Packing Upper and Lower GT polyethylene | ◆ | |
| Height | 82 (32.3) | cm (in) |
| Width | 35 (13.8) | cm (in) |
| Depth | 21 cm (8.3) | cm (in) |
| Wetted Parts: Hard Chrome SST, Standard SST, Carbide | ◆ | |
| Weight | 17 (37.5) | kg (lbs) |